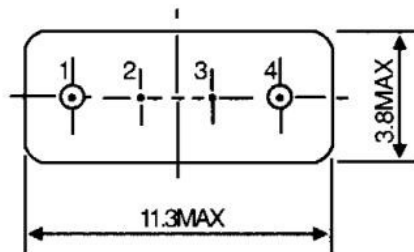
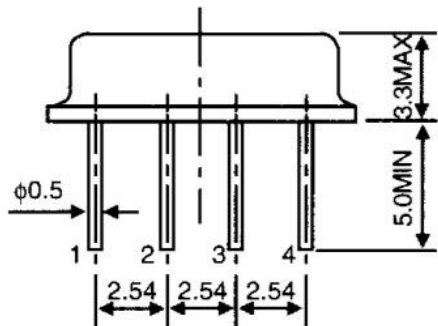


1. Package Dimension

(F11)

Unit: mm



F-11

Unit:mm



- 1.Input
- 2.Ground
- 3.Ground
- 4.Output

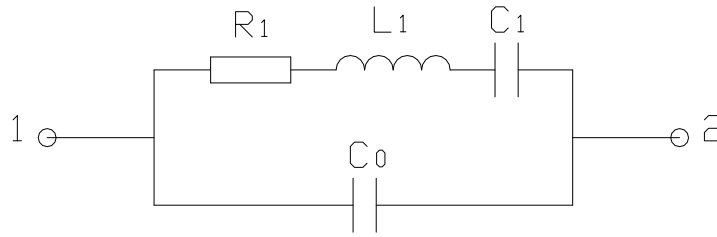
Pin No.	Function
Pin 1	Input
Pin 4	Output
Pin 23	Ground

2. Marking

R868

- 1. Black Ink Marking
- 2. R: Product Code
- 3. 01: One-port SAW Resonator
- 4. 868: Center Frequency

3. Equivalent LC Model



4. Performance

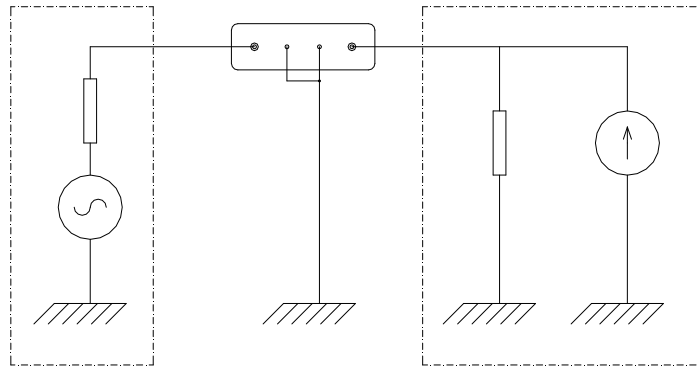
4.1 Maximum Rating

Item	Value
Operation Temperature Range	-40 °C to +80 °C
Storage Temperature Range	-45 °C to +85 °C
DC Voltage	10V
Source Power	0 dBm

4.2 Electronic Characteristics

Item	Units	Minimum	Typical	Maximum
Center Frequency (fo)	MHz	868.20	868.35	868.50
Insertion Loss	dB	—	1.5	2.0
Quality Factor				
Unloaded Q	—	—	11,000	—
50Ω Loaded Q	—	—	2,000	—
Temperature Stability				
Turnover Temperature	°C	—	25	—
Freq. Temp. Coefficient	ppm/°C	—	0.032	—
Frequency Aging	ppm/yr	—	<±10	—
DC Insulation Resistance	MΩ	1.0	—	—
RF Equivalent RLC Model				
Motional Resistance R1	Ω	—	18	26
Motional Inductance L1	μH	—	86	—
Motional Capacitance C1	fF	—	1.56	—
Shunt Static Capacitance C0	pF	1.7	2.0	2.3

4.3 Test Circuit



Note: Reference temperature shall be $25 \pm 2^\circ\text{C}$. However, the measurement may be carried out at 5°C to 35°C unless there is a dispute.