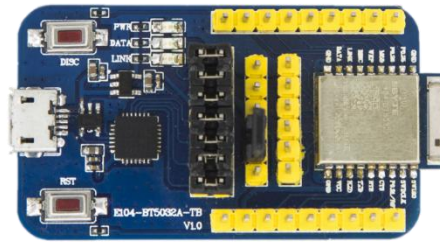




E104-BT5032A-TB Datasheet EN v1.0

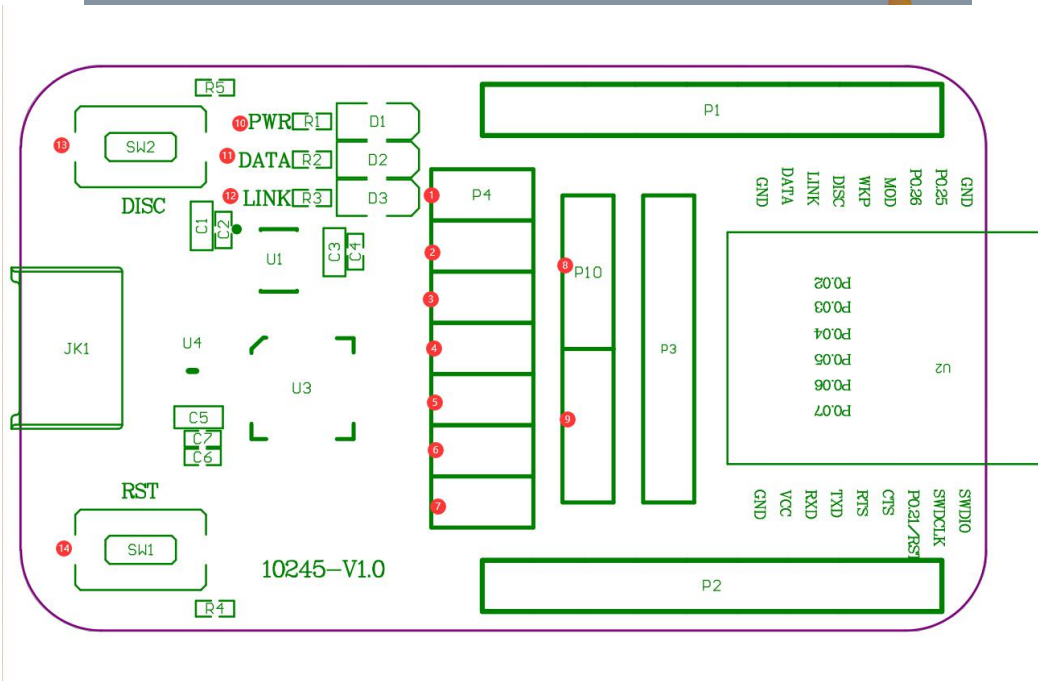
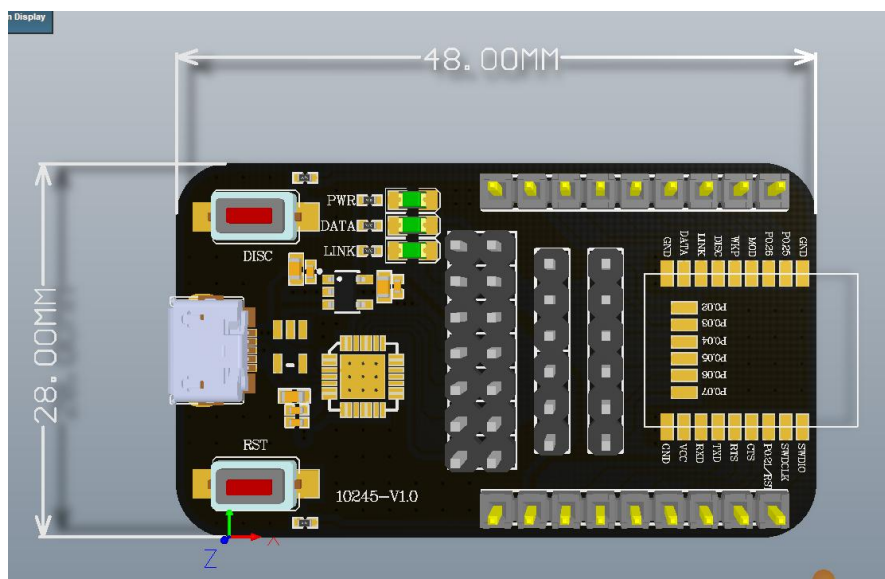


Introduction



1. This test kit is for testing and development of E104-BT5032A and E104-BT5010A. E104-BT5032A has been pre-welded on the test board, please refer to the E104-BT5032A module manual for detailed use.
2. All IOs of E104 series wireless module have been exported.
3. With CP2102 serial chip, the module can be developed via serial communication.
4. With USB interface, the test kit can be directly plugged into the computer for use.
5. User can connect external power and serial port.
6. Stable work and easy to develop.

2.Product Drawing



Pin Definition:

| | | | |
|----|---|----|---|
| 1 | DATA jumper selection | 2 | LINK jumper selection |
| 3 | External 3.3V power supply port, current test point | 4 | Serial RXD selection port |
| 5 | Serial TXD selection port | 6 | Flow control CTS selection port |
| 7 | Flow control RTS selection port | 8 | WKP select port |
| 9 | MODE selection port | 10 | Power Indicator |
| 11 | DATA indicator, flashing when sending data | 12 | LINK indicator, module connection indicator |
| 13 | DISC button to disconnect all connections | 14 | reset button |

Please refer to module user manual for more information.

3.Driver installation

This test kit uses the CP2102 chip as the serial port. Please click to download and use [Driver_CH341SER.zip](#); the serial number can be identified in the device manager after installation.

4.Technical Support

Please feel free to contact our technical support support@ebyte.com. We will provide technical support for our devices, excluding the usage of single chip microcomputer.

5.Revision history

| Version | Date | Description | Issued by |
|---------|------------|-----------------|-----------|
| 1.0 | 2019-10-22 | Initial version | - |

6.About us

Sales hotline: 4000-330-990

Tel: 028-61399028

Support: support@cdebyte.com

Website: www.ebyte.com

Address: Innovation Center B333~D347, 4# XI-XIN road,High-tech district (west), Chengdu, Sichuan, China



Chengdu Ebyte Electronic Technology Co.,Ltd.