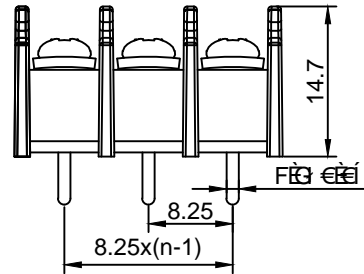
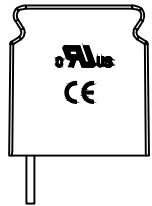


Material :

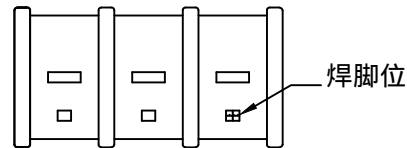
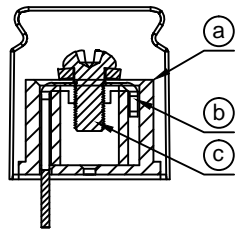
- (a) Housing : PBT+GF,UL94-V0
- (b) Terminal : Brass , Tin Plated
- (c) Screws : Steel , Ni Plated

Electrical :

- | | | |
|------------------------------|----------------|--------------------|
| | UL | IEC |
| 1.Rated Voltage : | 300V | 450V |
| 2.Rated Current : | 20A | 24A |
| 3.Torque Value : | M3 , 4.43Lb.in | M3 , 0.5N.m |
| 4.Wire Range: | 22-12AWG | 2.5mm ² |
| 5.Stripping Length : | 7-8mm | |
| 6.Withstanding Voltage : | AC1600V/1Min. | |
| 7.Operating Temperature : | -40~125℃ | |
| 8.RoHS Compliance | | |
| 9.Safety Approval : | UL | |
| 10.Undimensioned Tolerances: | | |



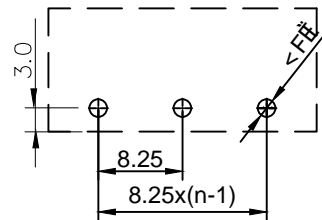
Pitch Range In mm		Nominal Dimension Range In mm					Tolerances	
mm	6	10	30	60	100	>150	0.05/10	
	~10	~24	~60	~100	~150			
±0.1		±0.1	±0.1	±0.1	±0.1	±0.1	±0.1	



GT35S-B - XXP - X X - 00 AH

① ② ③ ④ ⑤ ⑥

- ① Series No.
- ② Poles
02 02Contacts
03 03Contacts
...
24 24Contacts
- ③ 1 Single Pitch
2 Double Pitch
- ④ Color: 1 Grey
2 Blue
3 Black(Standard For AH)
4 Green
5 Orange
6 Red
7 Transparent
8 Yellow
9 White
- ⑤ Customer Request : 00--Standard
- ⑥ AH--Standard(PA66)



PCB LAYOUT

DETACHED LISTS	Grolten [®] 宁波冠泰电子有限公司 NINGBO GOLTEN ELECTRONICS CO., LTD.	
	APPD: MA_7/16/18'	PART NO. GT35S-B-XXP-XX-00AH
	CHKD: Yu_7/15/18'	
	DRFT: Chen_7/14/18'	DRAWING NO.
	 THIRD ANGLE PROJECTION	REV 1 SHEET 1/1 SCALE 1/1
MM (INCH) DO NOT SCALE DRAWING		