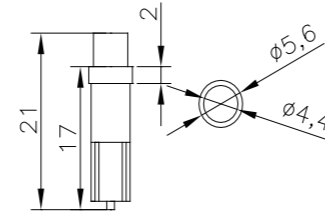


OST05WG01GD-XXXXXXXXXX

Flat



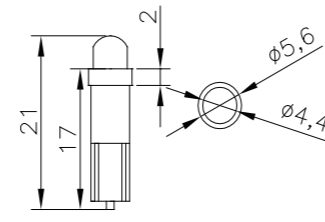
T5 Flat	Part Number
white	W5YKT5E1B
yellow	Y5RUT5E1B
red	R5RUT5E1B
green	G5DUT5E1B
blue	B5YUT5E1B



Round



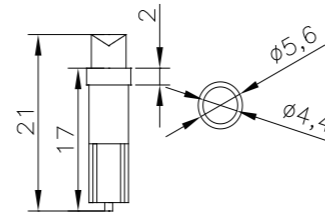
T5 Round	Part Number
white	W5YKT531B
yellow	Y5RUT531B
red	R5RUT531B
green	G5DUT531B
blue	B5YUT531B



Concave



T5 Concave	Part Number
white	W5YKT5C1B
yellow	Y5RUT5C1B
red	R5RUT5C1B
green	G5DUT5C1B
blue	B5YUT5C1B



Automotive LED T5 Series

- ◆ Dashboard Light
- ◆ Width-indicator Lamp
- ◆ Signal Light



Applications:



■ Absolute Maximum Ratings (Ta=25°C)

Items	Symbol	Values	Units
Operating Supply Range(DC)	Vi	16	V
Input Current (DC)	Ii	30	mA
Power Dissipation	Pa	0.48	W
Operating Temperature	Tope	-10 ~ +40	DegC
Storage Temperature	Tstg	-20 ~ +80	DegC

■ Typical Performance (Ta=25°C)

Items	Symbol	Min	Typ	Max	Units
LED Module Power	Pm	-	0.24	0.48	w
Input Voltage(DC)	Vi	-	12	16	V
Product input Current	If	-	20	30	mA
Beam Pattern	BP	-	-	-	Deg
Total diameter of PCB	Lmod	-	21	-	mm
Net Weight	Wei	---	0.36	---	g