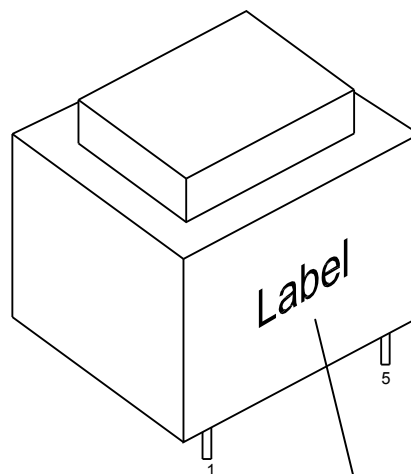
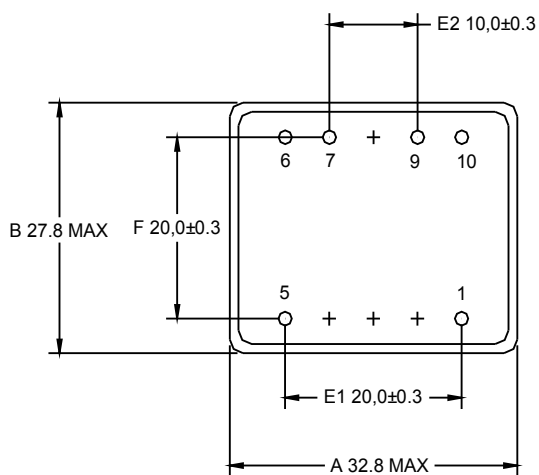
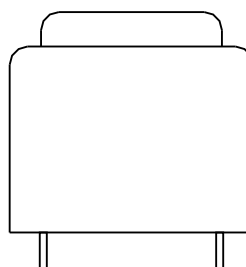
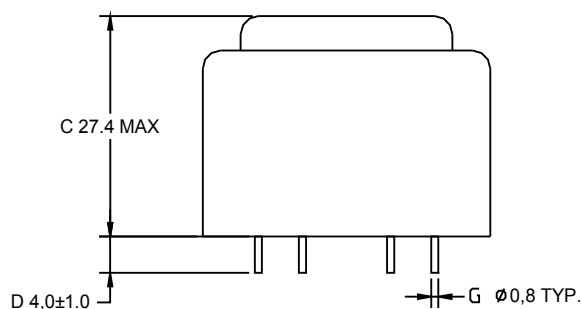


# TR Z02.00/2x15b II

## 1. Physical Dimension (UNIT: mm)



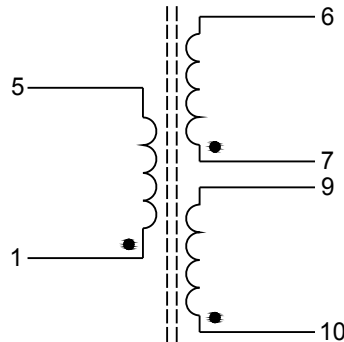
|        |                           |
|--------|---------------------------|
|        | <b>TR Z02.00/2x15b II</b> |
| MICROS |                           |
|        | PRI 230V~ 50/60Hz 1-5     |
|        | SEC 15V~ 1.0VA 6-7        |
|        | 15V~ 1.0VA 9-10           |
|        | ta 70/B                   |
|        |                           |
|        |                           |
|        |                           |

# TR Z02.00/2x15b II

1. SAFETY STANDARD: EN61558                      CORE SIZE: EI-30
2. ELECTRICAL PERFORMANCE:
  - 2-1. PRIMARY RATED VOLTAGE: AC 230 V / 50 Hz  
 EXCITING CURRENT: 11 mA MAX.              LOSS POWER: 0.8 W MAX.
  - 2-2. SECONDARY RATED VOLTAGE AND CURRENT:

|           | UNLOAD VOLTAGE | LOADING VOLTAGE | RATED CURRENT | DC RESISTANCE |
|-----------|----------------|-----------------|---------------|---------------|
| P: 1--5   |                |                 |               | 2420 Ω ±10%   |
| S1: 6--7  | 25VAC MAX      | 15VAC ±10%      | 67mA          | 84.8 Ω ±15%   |
| S2: 9--10 | 25VAC MAX      | 15VAC ±10%      | 67mA          | 75.2 Ω ±15%   |

3. INSULATION RESISTANCE TEST:  
500V DC 100MΩ min. FOR 1 MIN. (PRODUCTION LINE FOR 2S.) (PRI-SEC. & PRI.-CORE)
4. HI-POT TEST:  
 SHALL WITHSTAND WITHOUT BREAKDOWN  
  
 AC 3.75 KV FOR 1 MIN. OR AC 4.2 KV FOR 1S. (PRI.-SEC. & PRI.-CORE.)  
 (CUT-OFF CURRENT 1 mA)
5. TEMPERATURE RISE TEST: (Ta=25°C INPUT 230V 50Hz)  
 PRI. & SEC. WINDING'S TEMPERATURE RISE 45°C MAX. AT RATED LOAD. (RESISTANCE METHOD)
6. ELECTRICAL SCHEMATIC:



7. MAJOR MEASUREMENT FACILITIES:
  - A. DC-RESISTANCE METER: TH2512B
  - B. VOLTMETER: GDW4033A
  - C. AMPEREMETER: GDW4033A
  - D. TURN RATIO DETECTOR: YG-108R
  - E. HI-POT TESTER: CS5603
  - F. INSULATION-RESISTANCE METER: CS5603
  - G. MILIVOLTMETER: FLUCK 287
  - H. MULTI-FUNCTION OSCILLOSCOPE: DS-8608A
8. THE ABOVE-MENTIONED MEASUREMENT IS BASED ON THE BEGINNING OF AMBIENT TEMPERATURE.
9. Net Weight: 100 g/PCS