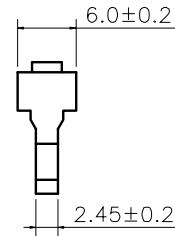
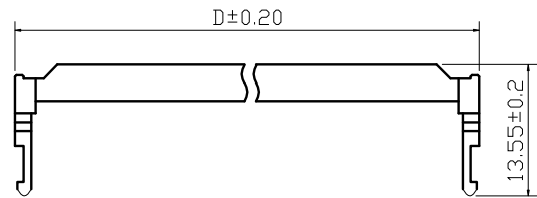
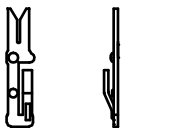
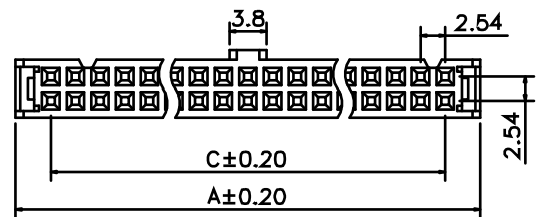
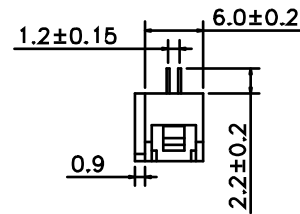
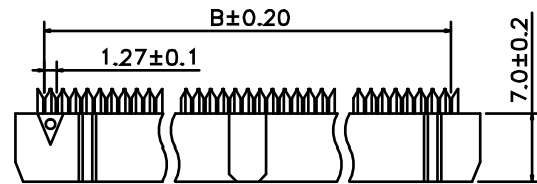
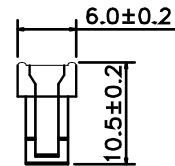
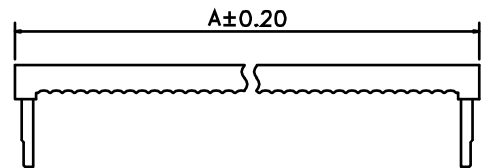


REV.	ECN NO.	DATE
A	N/A	2017/05/10




Material:
 Insulator: PBT
 Contact: Brass
 Contact Plated: Nickel Plated.
 Specification:
 Current Rating: 1 Amp.
 Withstanding Voltage: AC 500V for 1 Minute.
 Insulation Resistance: 100M Ohm Max. at DC 500V.
 Contact Resistance: 1 Ohm Min..
 Operating Temperature: -20°C ~ +105°C.



SINGLE CONTACT TYPE

Pos.	Dim. A	Dim. B	Dim. C	Dim. D
6	12.32	6.35	5.08	12.12
8	14.86	8.89	7.62	14.66
10	17.40	11.43	10.16	17.20
12	19.94	13.97	12.70	19.74
14	22.48	16.51	15.24	22.28
16	25.02	19.05	17.78	24.82
18	27.56	21.59	20.32	27.36
20	30.10	24.13	22.86	29.90
22	32.64	26.67	25.40	32.44
24	35.18	29.21	27.94	34.98
26	37.72	31.75	30.48	37.52
30	42.80	36.83	35.56	42.80
34	47.88	41.91	40.64	47.68
36	50.42	44.45	43.18	50.22
40	55.50	49.53	48.26	55.60
44	60.58	54.61	53.34	60.38
50	68.20	62.23	60.96	68.40
60	80.90	74.93	73.66	80.70
64	85.98	80.01	78.74	85.78

DRN.	SIGNATURE	DATE	TITLE:		CODE NO.	----	TOLERANCE:	
	CHEN	2017/06/10	CH-254-IDC-XX-B		CUS. NO.	----		
CHK.			C&L P/N:	CUS. P/N:	SCALE	----	.x ±0.2	DRAWING NO.
APP.					UNIT	mm	.xx ±0.1	
					PAGE	1/1	ANG.	