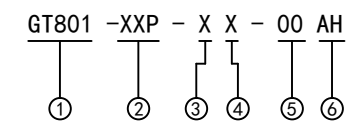
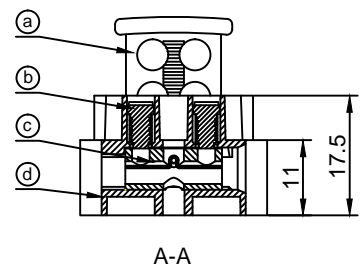


- Material :**
- (a) Hand : PA66 (UL94V-0)
  - (b) Screws : Steel , Cr<sup>3+</sup>Zn Plated
  - (c) Current Carrier1 : Brass with Stainless Steel wire protect
  - (d) Housing : PA66 (UL94V-0)
  - (e) Spring1 : Stainless Steel
  - (f) Cage : Brass Ni Plated
  - (g) Wire Guard : Phosphor Bronze , Ni Plated
  - (h) Current Carrier2 : Brass , Ni Plated
  - (i) Spring2 : Stainless Steel

- Electrical :**
- |                              |                |                        |
|------------------------------|----------------|------------------------|
|                              | UL             | IEC                    |
| 1.Rated Voltage :            | 300V           | 250V                   |
| 2.Rated Current :            | 6.3A           | 6.3A                   |
| 3.Torque Value :             | M3 , 4.43Lb.in | M3 , 0.5N.m            |
| 4.Wire Range:                | 22-14AWG       | 0.5-2.5mm <sup>2</sup> |
| 5.Stripping Length :         | 6-7mm          |                        |
| 6.Withstanding Voltage :     | AC2000V/1Min.  |                        |
| 7.Operating Temperature :    | -40°C~+105°C   |                        |
| 8.RoHS Compliance            |                |                        |
| 9.Safty Approval :           | CE             |                        |
| 10.Undimensioned Tolerances: |                |                        |

Pitch Range In mm			Nominal Dimension Range In mm					-	∩	∇
≤6	6 ~ 10	10 ~ 24	≤30	30 ~ 60	60 ~ 100	100 ~ 150	>150	0.05/10	<	
±0.10	±0.15	±0.25	±0.20	±0.30	±0.50	±0.70	±1.00	±0.1°		



- ① Series No.
- ② Poles  
02 02Contacts  
03 03Contacts  
...  
05 05Contacts
- ③ 1 Single Pitch  
2 Double Pitch
- ④ Color: 1 Grey(Standard For AH) 2 Blue  
3 Black  
4 Green  
5 Orange  
6 Red  
7 Transparent  
8 Yellow  
9 White
- ⑤ Customer Request: 00--Standard
- ⑥ AH--Standard(PA66)

DETACHED LISTS	<b>Grolten</b> NINGBO GOLTEN ELECTRONICS CO., LTD.		宁波冠泰电子有限公司		
	APPD: MA_7/18/17'	CHKD: Yu_7/17/17'	PART NO. GT801-XXP-XX-00AH		
	DRFT: Chen_7/16/17'	DRAWING NO.		REV	1
	THIRD ANGLE PROJECTION		MM (INCH)	DO NOT SCALE DRAWING	SHEET
			SCALE	1/1	