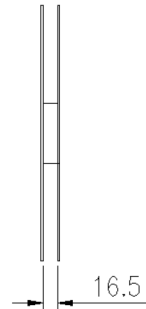
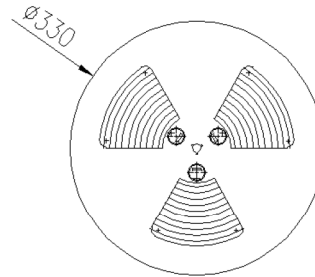
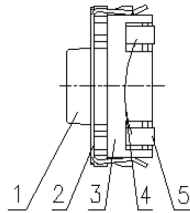
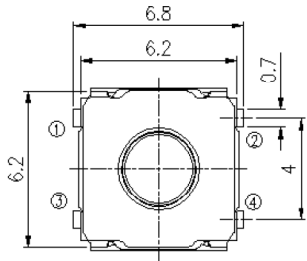
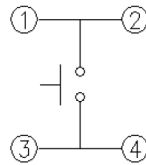
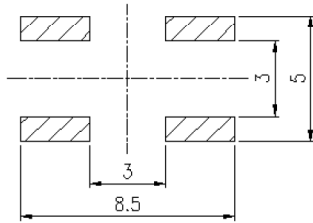
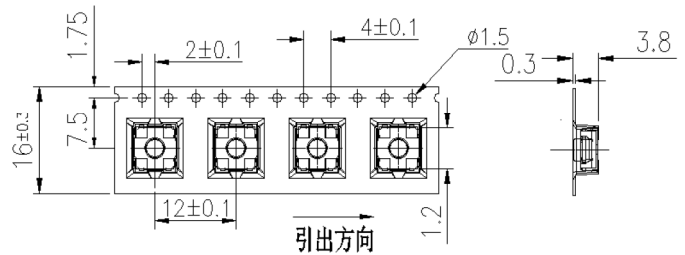
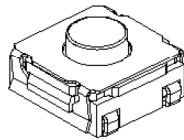
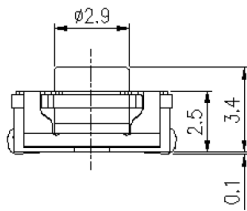


APPROVAL SPECIFICATIONS

CUSTOMER	CUSTOMER'S P/N	GYE'S P/N	PRODUCT	REVISION
		KAN6247-0343M1	TACT SWITCH	B



1 REEL = 1300 PCS



P. C. Board Dimension

Circuit

General tolerance: $\pm 0.2\text{mm}$

NO.	NAME	MATERIAL	QTY	FINISHING
1	STEM	Silicone	1	White
2	COVER	SUS	1	Natural
3	CASE	PPS	1	Black
4	CONTACT	SUS301/Ag Clad	1	Natural
5	TERMINAL	Brass	4	Ag plated